



# Community Care

Empowering you to live at home  
in the City and County of Peterborough

# Annual Report

## 2025 - 2026

Life Changes,  
Community Doesn't



[www.commcareptbo.org](http://www.commcareptbo.org)

## Board President Message

Life is constantly changing - families grow and evolve, health needs shift, and circumstances can change in ways we never expect. Yet through all of life's transitions, one thing remains consistent: *the importance of having the support of a community.*

At the heart of the work that Community Care's staff and volunteers deliver every day is COMMUNITY. Each day, we see neighbours helping neighbours, volunteers giving their time generously, and staff providing compassionate support that helps people remain connected, independent, and cared for. These acts of kindness and commitment remind us that community is not defined by circumstance, but by how we show up for one another.

On behalf of the Board of Directors, I want to express sincere appreciation to everyone who contributes to the important work of Community Care. To our staff and volunteers, thank you for the care, professionalism, and dedication you bring to our community each day. To our donors, partners, and supporters, thank you for your continued trust and generosity. Your support enables Community Care to respond to changing needs while remaining grounded in our mission and values.

As a Board, we are committed to ensuring that Community Care remains sustainable and responsive for years to come. Together, we will continue building a community where people feel supported no matter how life changes.



Danielle Belair, Chief Executive Officer



## Chief Executive Officer Message

Every day at Community Care Peterborough, I am privileged to witness the tangible impact our staff and volunteers make in the lives of our clients and the communities we serve. Seeing our mission in action, whether through delivering Meals on Wheels, driving clients to medical appointments, supporting someone at home after a hospital stay, making friendly visits and reassurance calls, is a daily reminder of why we do this work.

As I look back on the past year, I am filled with profound gratitude for the vibrant organization we have built together. *"Because We Care"* we go beyond just providing services, we're dedicated to ensuring more than 6,300 seniors and adults with disabilities throughout the City and County of Peterborough feel truly supported, connected and cared for in their home.

2025 was a year of transformative growth for Community Care Peterborough. Knowing that the needs of our aging population are evolving, our commitment is not just about expanding our reach, it is about redefining how we deliver services through strategic partnerships and innovative care models.

Demand is increasing across all service areas. Access to Primary Care, transportation and Meals on Wheels continue to see the most significant growth, underscoring the importance of financial support. We must proactively ensure that organizational growth and change are sustainable and funded, to ensure we can meet these evolving needs.

To our extraordinary staff and management team, you are the heart of Community Care. Thank you for bringing your skills, your energy, and your hearts to work every single day. You are the foundation of our success and the reason we can say, with confidence, that we are making a difference. I am deeply grateful to our dedicated volunteers, board members, donors, and our partners for their unwavering support. We are looking forward to a productive, successful year ahead.

We are pleased to share our annual report, showcasing the key initiatives and milestones the organization has achieved this past year. We invite you to read through our journey.



## Vision

Communities where every person's health, wellness and independence is deeply valued and fully supported.



## Mission

Powered by volunteers and staff, Community Care Peterborough supports the health and well-being of individuals, caregivers and communities. As a trusted health care partner, our high-quality programs allow people across our rural and urban region to maintain their independence and dignity.



## Values

Respect, Collaboration, Accessibility and Leadership.

## Senior Management Team

<b>Danielle Belair</b>	Chief Executive Officer
<b>Catherine Pink</b>	Director, Operations
<b>Dalma Ladi-Vecsei</b>	Director, Finance & Administration
<b>Chris LeBlanc</b>	Director, Donor & Public Relations

## Recognizing Staff Milestones

<b>Iris Crowder</b> , Care Navigator [25 Years]
<b>Tracy Kennedy</b> , Supervisor of Peterborough Programs [10 Years]
<b>Lou O'Hara</b> , Specialized Transportation Driver [5 Years]

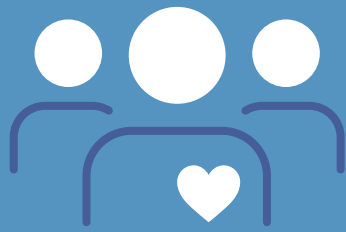
## 2025-2026 Board of Directors

<b>Beth Malcolm</b>	President
<b>Pete Wood</b>	Vice-President
<b>Dave Stevenson</b>	Treasurer
<b>Dr. Janet Kelly</b>	Past President
<b>Debbie Anderson</b>	Director
<b>Gerry Bleau</b>	Director
<b>Richard Boire</b>	Director
<b>Kim Carrothers</b>	Director
<b>Andrew Graham</b>	Director
<b>Ramesh Makhija</b>	Director
<b>Anda Rungis</b>	Director
<b>Sonja Sohi</b>	Director
<b>Beth Steinmiller</b>	Director

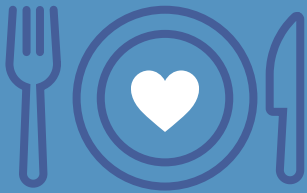
*We extend our sincere thanks to retiring Board members Beth Steinmiller, Andrew Graham, Ramesh Makhija, and Sonja Sohi.*

# A Year at a Glance at Community Care

April 1, 2025 to March 31, 2026



Served over 6,345 clients, with 835 volunteers. Provided 85,166 hours of service, equal to 46.8 full-time employee positions.



54,233 Meals delivered



20,475 Reassurance calls/Friendly visits provided



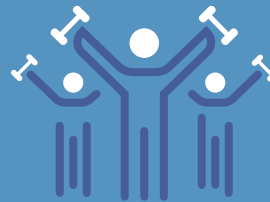
4,473 Grocery deliveries



8,699 Home Help & Maintenance visits



30,687 Drives provided



51,645 Exercise & Falls Prevention Classes



417 Home At Last settlements



640 Access to Primary Care appointments

## Behind the Numbers

These numbers tell the story of thousands of moments of care shared across our communities. While life changes in ways we cannot always predict, the support of neighbours, volunteers, donors, and staff continues to remind people they are not alone.

# Community Care Services

Community Care Peterborough is rooted in local communities, with eight offices across the City and County. We are committed to helping people stay independent, supported, and connected to their community.

## Healthy Eating

- Hot Meals on Wheels
- Frozen Meals on Wheels
- Grocery Shopping/Delivery

## Transportation

- Volunteer Drivers
- Specialized Transportation
- Caremobile
- Shopping Buddy or Attendant
- Access to Primary Care

## Health & Wellness

- Exercise, Falls Prevention, and Wellness Classes
- Blood Pressure Clinics
- Foot Care Clinics

## Help & Support at Home

- Brokered Home Help & Home Maintenance
- Friendly Visiting – In-home or Telephone
- Medical Equipment

## Safety at Home

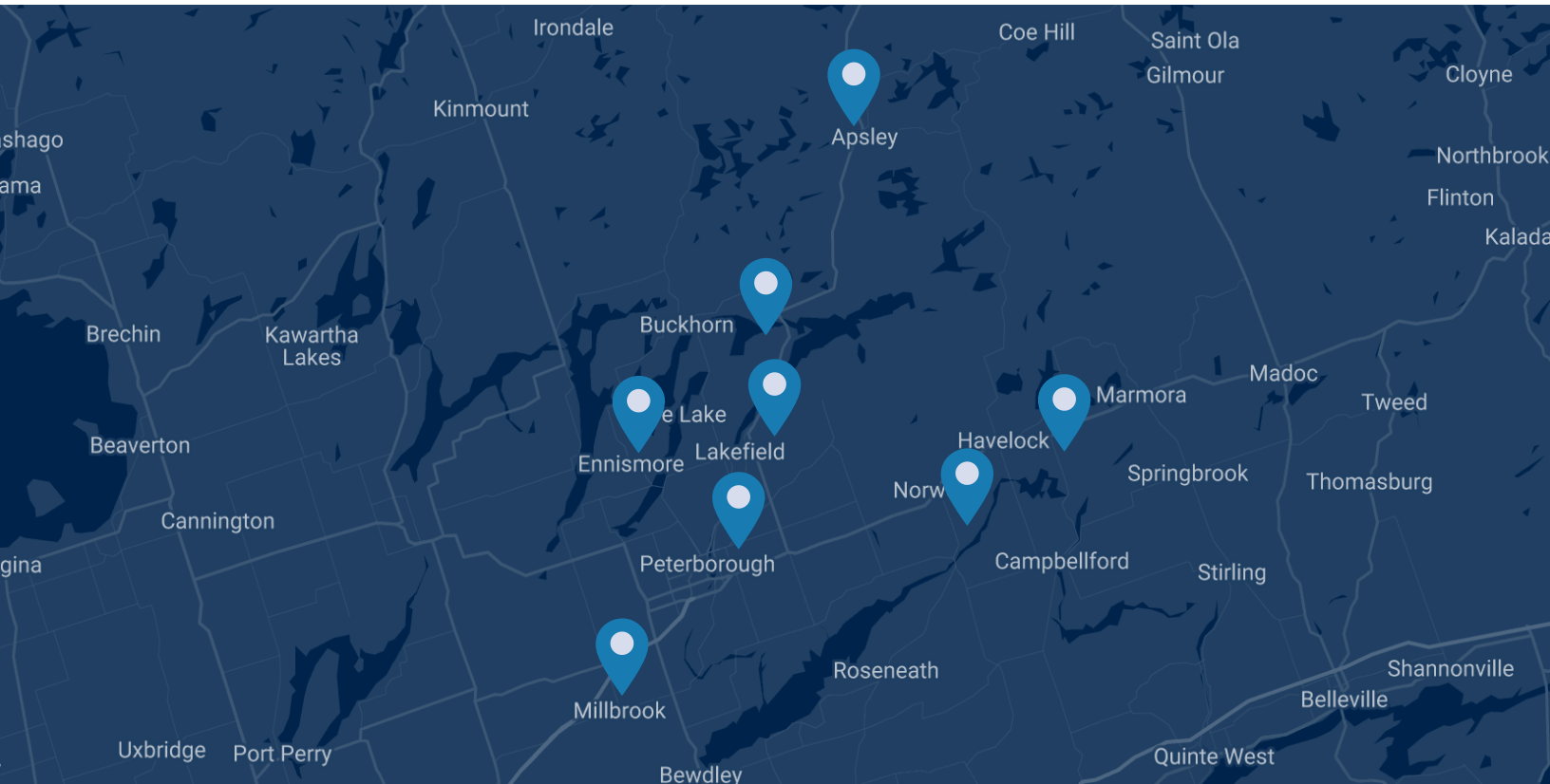
- Telephone Reassurance Calls
- Lifeline Emergency Response

## Hospital to Home

- Home at Last
- Home First

## Dining & Recreation Events

- Diners' Clubs
- Coffee, crafts, and various groups



**For more information about our supports, contact your local service office:**

- Apsley:** 705-656-4589
- Buckhorn:** 705-657-2171
- Chemung:** 705-292-8708

- Havelock:** 705-778-7831
- Lakefield:** 705-652-8655
- Millbrook:** 705-932-2011

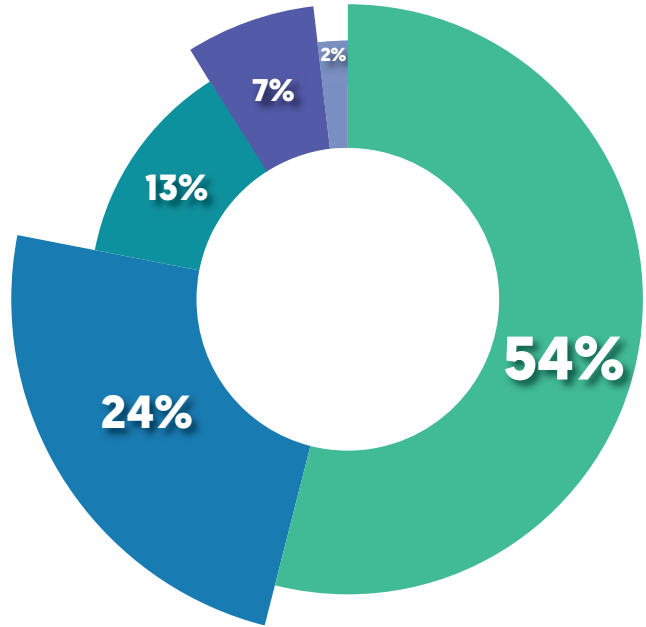
- Norwood:** 705-639-5631
- Peterborough:** 705-742-7067

# Financial Highlights

## Source of Revenue for Agency Activities

**\$3,777,900**

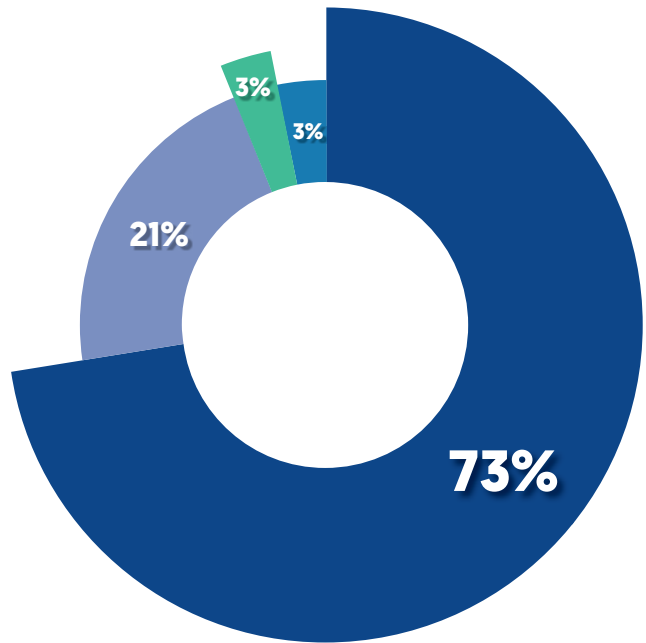
<span style="color: green;">■</span> Ontario Health East	54%
<span style="color: blue;">■</span> Donations & Fundraising	24%
<span style="color: teal;">■</span> Service Revenues	13%
<span style="color: purple;">■</span> City & County/Grants	7%
<span style="color: lightblue;">■</span> United Way	2%



## Use of Revenue for Agency Activities

**\$3,844,320**

<span style="color: darkblue;">■</span> Direct Client Services	73%
<span style="color: lightblue;">■</span> Indirect Client Services	21%
<span style="color: green;">■</span> Other: (Volunteers)	3%
<span style="color: blue;">■</span> Fundraising	3%



*Audited Financial Statements available on request*

## How Community Care is Funded

Community Care Peterborough is often understood as a fully government-funded organization, but this is not the case. Funding from the Ministry of Health accounts for just over half of our annual revenue.

To keep services accessible and affordable, we rely on support from donors, grants, and community partners to fund the remaining portion of our work. This balance allows us to limit fees for clients while continuing to meet growing demand across the communities we serve.

## Impact Story

# Carrying Less Alone

### How Community Care Lightened the Burden for Callie & Chuck

As Callie has grown older, she has learned to pay close attention to what her body can manage. Living with painful arthritis means that even routine appointments can require careful planning and extra energy.

One summer day at Peterborough Regional Health Centre, she found herself facing the same familiar questions again. Would there be an accessible parking space? How far would she have to walk? How much energy would the appointment itself leave her with afterward?

*“One day,” she said simply, “I realized I couldn’t do this again.”*

By then, Community Care was already part of her family’s life. As her husband Chuck’s health needs became more complex, they had been connected with support through the health system. What began with transportation to appointments gradually became something much larger: guidance, reassurance, and people who understood the realities of aging in a rural community.

What Callie did not realize at first was that Community Care could support her, too.

When getting to the hospital became too difficult, she called the Lakefield office and spoke with Community Development Coordinator Lorri Rork, who helped her understand her options. Soon, a volunteer driver was taking her to appointments, allowing her to focus on her health instead of the stress of parking, walking long distances, or navigating the hospital on painful days.

*“I don’t have to worry about the parking,” Callie explained. “That alone was a huge relief.”*

As time went on, Community Care became more than a service connected to Chuck’s care. Transportation eased one of the most physically demanding parts of caregiving. Help around the house reduced daily pressures. And when new questions or challenges emerged, there was finally someone to call.

*“It’s like a weight off our backs,” Callie said. “I didn’t have to shoulder the whole thing by myself. There was someone there to help.”*

That support became especially important during the uncertainty and isolation of the pandemic, when regular check-ins from staff reminded them they were not navigating things alone.

*“We weren’t by ourselves,” she said.*

Today, Chuck lives in a retirement setting with additional supports, but Community Care continues to play an important role in his routine. Through a specialized transportation and accompaniment program, trained staff help him get to medical appointments, remain safe during visits, and understand follow-up care afterward.

For Callie, the greatest surprise was realizing how uncommon this kind of support can be. Friends in other communities had never heard of services like these, or of an organization that could help connect the many pieces of aging and caregiving together.

*“I feel very lucky we’re here,” she said. “People should know about this.”*

Community Care did not remove the challenges Callie and Chuck faced. What it did was make those challenges easier to carry. It replaced constant worry with reassurance and overwhelming moments with the comfort of knowing someone was there to help.

And sometimes, that kind of support can change everything.

*“It’s like a weight off our backs.”*



# Fundraising Highlights

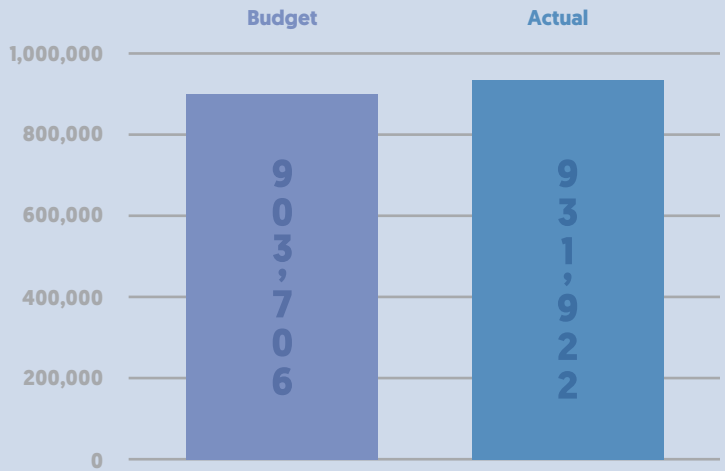
This year, fundraising at Community Care Peterborough was driven by strong local support across the communities we serve, with most offices meeting or exceeding their fundraising goals. Our annual appeal reached a new milestone, surpassing six figures for the first time, while loyal donors continued to serve as the foundation of our work, showing up year after year to sustain our services.

## Total Fundraising Revenue: Over & Above

In 2025-2026, we raised **\$931,922** from donors and fundraising events – exceeding our budgeted goal by **3%**.

### Fundraising Revenue

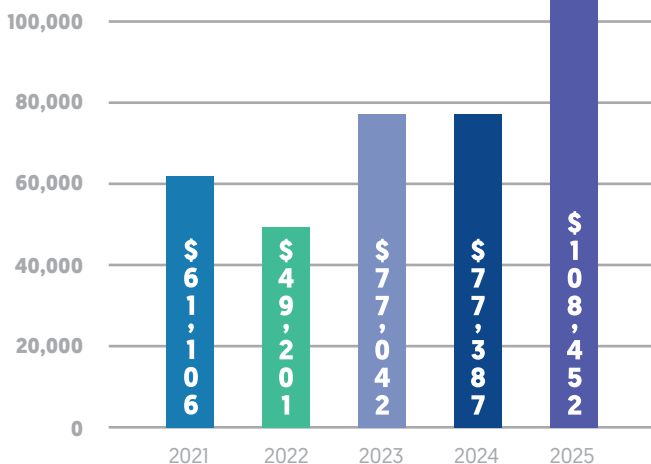
Budget	<b>\$903,706</b>
Actual	<b>\$931,922</b>



## Annual Appeal Update: Record High for Third Straight Year

The 2025 Annual Appeal surpassed **\$100,000** for the first time, exceeding our previous record by more than **\$30,000**. This milestone reflects strong support across our communities, including a significant increase in volunteer participation, with the number of volunteers who gave to the appeal doubling year over year.

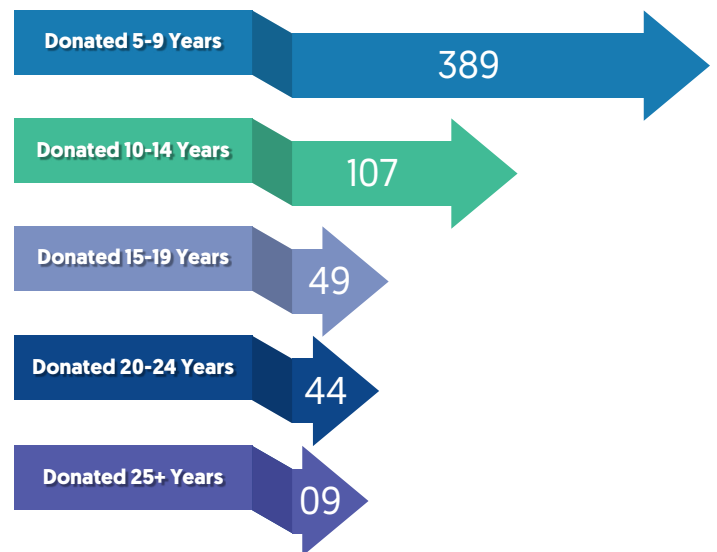
Total Annual Appeal Revenue (Yearly)



## Loyal Donor Spotlight: A Community That Always Shows Up

Community Care is sustained by donors who continue to support our work year after year. This year, more than **590 active donors** have given for at least five years, **including 9 who have supported Community Care for over 25 years**.

### Loyal Donors



## Donor Spotlight

# Three Decades, One Commitment

### How Exceptional Loyalty Created Exceptional Impact

In 1997, Community Care Peterborough was still a young organization. Some services looked different. Offices were smaller. Many of the systems and programs that exist today had not yet been built. But even then, people across the City and County recognized something important taking shape: neighbours helping neighbours remain supported, independent, and connected close to home.

Nearly thirty years later, a remarkable group of donors continues to quietly carry that work forward.

This year, Community Care recognizes four donors who have supported the organization every year since 1997: Barbara Watt of Apsley, John Good of Lakefield, Bryan and Diane Jones of Lakefield, and Hilda Cole of Havelock. Together, their giving reflects something deeper than longevity alone. It tells the story of steady, local commitment sustained across decades of change.

Their names are part of a much larger history. Since 1997, hundreds of individuals, businesses, churches, service clubs, and community organizations have supported Community Care in ways both large and small. Some gave for a few years. Others continued for decades. Some are no longer with us. Yet the impact of that generosity continues to shape the organization and communities we serve today.

What makes this particular group remarkable is not the size of their gifts, but their consistency. Year after year, through changing circumstances, economic uncertainty, family milestones, and aging, they continued to give.

For many, that support was never about recognition. It was simply about helping sustain something they believed mattered.

Barbara Watt described her support as an investment in the community, something practical and worthwhile that benefits everyone. Over time, she came to see Community Care almost as a form of “social insurance,” support you may one day need yourself.

That understanding has become especially meaningful as some long-time donors now rely on Community Care services personally. Hilda Cole, who lives in Havelock, spoke about the importance of transportation services in rural communities, where maintaining independence can become difficult without local support systems in place.

Others reflected on the quiet practicality of Community Care’s work. Long-time donor Bob Helsing described the organization as providing “practical, everyday support,” helping people navigate ordinary challenges that become harder with age, illness, or isolation.



Looking back at donor records from 1997 tells a broader story of community itself. Alongside individual donors were Legion branches, churches, Lions Clubs, municipalities, local businesses, seniors groups, and service organizations, many of whom continued supporting Community Care for decades. Their names reflect communities that understood care not simply as a service, but as a shared responsibility.

Today, as Community Care continues to evolve and respond to growing needs across the City and County, that same spirit remains at the heart of the organization.

Some support arrives through volunteering. Some through fundraising events. Some through donations quietly made year after year without attention or fanfare.

But together, they create something enduring: a community where people continue to show up for one another across generations.

And after nearly thirty years, that may be the most remarkable legacy of all.

# 2026 Volunteer Service Awards

<b>40 Years</b>	Janice Sloan	Pat Carey	Doug Unsworth	Cathy Lunn
Barb Dicemen	Cindy Blodgett	Sue Jones	Irene Kueng	Dennis Gibson
<b>25 Years</b>	Gordon Elliott	James Patterson	Nancy Burrell	Bruce Wilkie
Ruth Deyell	Patricia Barker	Dave Hevenor	Mirella Heckley	Patricia Lett
Grace Reid	<b>15 Years</b>	Gina Rothwell	Nancy Sacchitiello	Sue McKinlay
Cathy Turner	Gail Hicks	Bob Morrison	Nick Sacchitiello	<b>5 Years</b>
Peter Tiesma	Joan Guyatt	<b>10 Years</b>	Jean McGarrity	34 Recipients
Sharon Simpkins	Sharon Gilkinson	Diane Horner	Margaret Harding	<b>2 Years</b>
<b>20 Years</b>	Carol Wilks	Barbara Steel	Louise Martin	76 Recipients
Nancy Graham	Al Smith	Heather Dummitt	Claire Van Loon	
Eric Sloan	George Watson	Patricia Ward	John Lucy	



## Volunteer Testimonials

- “ To see clients smile is my reward. ” - Debra U
- “ I feel volunteering has a positive impact on our community and I like being part of this organization. ” - Patricia S
- “ I love working at the Lakefield office. Best thing to happen to me since I retired! ” - Carol F
- “ Katie runs the Apsley Office with exceptional kindness and grace. She cares for her volunteers, trains them well, and helps us feel like a team. ” - Carolyn C
- “ I feel very comfortable in my volunteer role, there is always someone to ask about something I am not sure about. ” - Linda L

# Volunteer Spotlight

## A Life of Showing Up

### Ruth Deyell, 25 Years of Service

When Ruth Deyell was recognized for 25 years of volunteering in Millbrook, she had a simple reaction.

*“Holy jumping,” she laughed later. “I couldn’t believe I did all that.”*

As Danielle Belair shared the many roles Ruth had taken on over the years, Ruth found herself surprised by how much she had done. Not because it wasn’t meaningful, but because she never thought of it that way.

*“When you’re doing it, you’re not keeping track,” she said. “You just do it.”*

Ruth began volunteering with Community Care in the fall of 2000, shortly after retiring. She had seen a small notice looking for volunteers and decided to give it a try. Having grown up in the community, she already knew many of the people who might need support.

In those early days, the work was simple and local. Community Care had just opened a small office in Keene, operating out of a church with a handful of volunteers and a willingness to help wherever needed.

Over time, as needs shifted, that office closed and services were connected through nearby communities. Ruth continued on, volunteering through the Millbrook office, where she remains involved today.

*“I did everything that was available,” Ruth said. “Respite, friendly visiting, the phone calls, coordinating drives... whatever was needed.”*

That same approach carried through the years. When she was asked to serve on the Board of Directors, she said yes. When new needs emerged, she stepped in.

One of the areas she became especially connected to was the Grandparent of the Year Awards. For many years, Ruth took the lead in gathering prizes from local businesses, visiting them in person and building relationships along the way.

*“I loved going around town and picking up those prizes,” she said. “That was my baby.”*

She also helped read and judge the letters submitted by children about their grandparents.

Celebrating Ruth Deyell — 25 Years of Dedicated Volunteer Service with Millbrook Community Care



*“Some made you cry, some made you laugh,” she said. “Those stories were treasures.”*

Over time, what stayed with Ruth most wasn’t the list of roles or the number of years. It was the people.

*“It’s the greatest reward,” she said.*

*“To see the smile on someone’s face when you come in... sometimes they don’t even want you to do the work. They just want you to sit and visit.”*

That sense of connection shaped how Ruth approached her time as a volunteer. It wasn’t something separate from her life. It became part of it.

*“You rearrange your day,” she said. “You put other things aside. You just go and do what you need to do for someone.”*

Looking back, Ruth sees volunteering as something more than service.

*“You’re going to be there one day,” she said. “You’re going to need someone to come and help you.”*

For 25 years, Ruth has been that person for others.

And in doing so, she helped build the kind of community we all hope to rely on.

## Volunteer with Community Care

We have more than 800 volunteers across the City and County of Peterborough — and there’s a place for you here, too.

To support our mission through volunteering, please call **705-742-7067** or email [volunteer@commcareptbo.org](mailto:volunteer@commcareptbo.org)

# Strengthening Community, Together

Throughout the year, Community Care Peterborough continued to strengthen the connections that help people remain supported, independent, and engaged in their communities. From expanding wellness programming and community partnerships to investing in volunteer engagement and donor relationships, these efforts reflect our ongoing commitment to building stronger communities across the City and County of Peterborough.

## Growing Community Presence

Community Care continued to expand its visibility and partnerships across the region through outreach initiatives, collaborative projects, and new community resources designed to help people better access services and support. Staff and volunteers participated in a record number of community fairs, presentations, and outreach events while strengthening relationships with organizations and municipalities across the County.

- New Information Guide and Directory launched in partnership with Age Friendly Peterborough and United Way
- Rural Transportation Feasibility Study initiated with support from local municipalities
- Expanded outreach through fairs, expos, presentations, and community partnerships



## Wellness Beyond Exercise

Over the past decade, Exercise and Falls Prevention has evolved into one of Community Care's most important gateways to wellness, social connection, and community engagement. Beyond physical activity, the program helps reduce social isolation while connecting participants to friendships, wellness activities, and additional Community Care services.

- Approximately 74 classes offered each week across the City and County
- Programming available at 31 locations and online through Zoom
- More than 1,250 participants served annually

# Sustaining Services Through Community Support

Strong fundraising results and community partnerships helped Community Care continue responding to growing demand while keeping services accessible across the communities we serve. Community-led fundraising initiatives and donor support continue to play an essential role in sustaining local programs and services.

- “Because We Care” became the most successful direct mail appeal in Community Care history
- Buckhorn Bottle Drive raised more than \$23,500 in support of the Buckhorn office
- Access to Primary Care expanded through one-time funding support for transportation and accompaniment services



## Investing in People and Relationships

This year, Community Care strengthened its focus on volunteer engagement, workplace culture, storytelling, and personalized donor stewardship. Through new partnerships and communications initiatives, we continued highlighting the people and stories that shape our communities and organization.

- Volunteer recruitment campaign launched featuring Meals on Wheels volunteers Jim and Bob
- Partnership established with Lakefield College School to support volunteerism and community engagement
- 100% of employee survey respondents reported feeling valued, appreciated, and supported in their work

### Please Donate

Community Care relies on the generous support of our community to provide vital services to seniors and adults living with physical disabilities in the City and County of Peterborough. Your donation helps ensure that our clients can remain independent and live in the comfort of their own homes.

To support our mission, please contact **Pamela Beauchamp**, Marketing & Fund Development Coordinator, at **705-742-7067 ext. 221**, or visit our website at [www.commcareptbo.org](http://www.commcareptbo.org) to donate today.

# Our Thanks To...

Community Care Peterborough is grateful for the generous financial support provided by **Ontario Health East**. Their contribution plays a crucial role in helping us deliver essential services to our community.

We also extend our heartfelt thanks to the **United Way Peterborough and District** for its continued partnership and funding, which supports our efforts to make a meaningful impact.

Our sincere appreciation goes to the **City of Peterborough**, the **County of Peterborough**, local **Township offices**, and the many **individuals, media outlets, service clubs, churches**, and **businesses** whose financial contributions, encouragement, and in-kind donations help sustain our programs and services.

Finally, we would like to acknowledge our **business partners**, whose generosity in supplying goods or collaborating with us on service delivery ensures that we can meet the growing needs of our community.

## Enhanced Funding

Community Care would like to acknowledge the following organizations who provided us with additional funding and grants during this past year:

Accurate Accounting & Tax Service	Ennismore 200th Committee	LLF Lawyers	Royal Canadian Legion Branch #381 [Apsley]
Agilec Employment Services	Ennismore Seniors	McAuley Financial Services	Royal Canadian Legion Branch #402 [Millbrook]
Alf Curtis Home Improvements Inc.	Farm Credit Canada	Medigas, a Linde company	Royal Canadian Legion Branch #77 [Lakefield]
Align Home Health Care	Fellowship Baptist Church	Millbrook & District Food Share	Scotiabank
Alterna Savings	Fidelity Investments Canada	Millbrook - Cavan United Church	Senior Assist Realtor, Cindy Reid
Anden Kitchen & Bath Centre	Fox Law	Millbrook and District Lions Club	Sharper Construction
Apsley Veterinary Services	Gail Burton Personal Real Estate Corporation	Millbrook Community Choir	Sherry & Sean Bourne Family Charitable Foundation
Asphodel Norwood Friendship Club	Gailey Foundation	Millbrook Farm & Pet Supplies	Spring Rock Camp
Ball Real Estate Inc. [Apsley]	Gauvreau Accounting Tax Law Advisory	Millbrook Foodland [Helm Foods & Associates]	St Patrick's Catholic Elementary School
Ball Real Estate Inc. [Lakefield]	Glenwood Construction Ltd	Millbrook Manor Seniors Association	St. James Anglican Church, Emily
Bell Canada, Employee Giving - Retirees Grant	GM Financial	Millbrook Needlers	St. Martin Catholic Women's League
Black & McDonald Limited	Grady's Feet Essentials Ltd.	Monaghan Lumber Specialties	St. Thomas More Catholic Women's and Men's Council
Blake's Village Square Properties Ltd	Havelock Foodland	Napa Auto Parts, Sidey Auto Supply Inc.	Sullivan's Pharmacy
Brett Funeral Chapels Ltd	Herod Financial Services	New Canadians Centre	SurNet Insurance
Brian Mulligan Insurance Agency Ltd	Hitchon's Pump House	Norwood Agricultural Society	Swish Maintenance
Buckhorn District Lions Club	Holmes Riseley CPAs & Tax Advisors	Otonabee Massage & Wellness	Sysco Ontario North Region
Buckhorn Heights Cottagers Association	Hospice Peterborough	Parish of Belmont	TD Canada Trust Bank [Head Office]
BWXT Nuclear Energy Canada Inc.	IG Wealth Management	Part Time CFO Services	Tecasy Ranch [via Kindred Foundation]
Canada Helps	Imprinted Apparel Store	Party Novelties	The Anglican Church of St. Matthew/St. Aidan
Cashew Products Inc	ISL Insurance Brokers	Passageway Law LLP	The Deck Guys
Castle Building Centres Group, Ltd.	Kawartha Downs RIC [KDL] Inc	Pastry Peddler Bistro	The Gardens of Peterborough - AON Inc.
Cavan Chiropractic	Kawartha Financial Services - Chemong Rd	Paxton Transport Ltd	Three Castles Resorts Ltd.
Cavendish Community Policing	Kawartha Highlands Canvas	Peterborough and Kawarthas Chamber Of Commerce	Timberline Custom Homes
Chandos Lake Property Owners Association	Kawartha Quilting and Sewing	Peterborough Automotive	Trent Athletics
Chemong Lodge	Kawartha Youth Orchestra	Peterborough Family Health Team	TVM Group
Chemung Lake District Lions Club	Keg Steakhouse + Bar - Peterborough	Peterborough Humane Society	UA Local 401
Clark Breuls Remax	Knights of Columbus Ennismore Council	Peterborough Lakers Lacrosse	Unifor Local 1996
Clarke's Service Centre Inc.	Kyle Family Foundation	Peterborough Minor Hockey Council	Unity Design Studio
Coldwell Banker Electric Realty	Ladies Auxiliary, Royal Canadian Legion # 402 [Millbrook Branch]	Peterborough Petes	UYK Technologies
Congregation of The Sisters of St. Joseph	Lakefield and District Lions Club	Peterborough West Animal Hospital	Village Pharmacy Lakefield Ltd
Connor Windows Doors and Sunrooms	Lakefield Baptist Church Women's Ministries	Phyllis MacMartin Charitable Fund	Whale Family Chiropractic
Creekside Music Festival	Lakefield College School	Pioneer Inc	White's Wearparts Ltd.
Crozier	Lakefield IDA Pharmacy Inc	Probus Club of Lakefield	Wildfire Golf Club
D.M. Wills Associates Limited	Lakefield United Church A.O.T.S.	PTBO Canada Media Inc.	Woodleigh Farms Ltd.
Darling Insurance	Men's Club	Rapid Lift Inc	Woody's Holdings Limited
Davcon Exteriors Inc	Lakefield Village Lions Club	RBC Foundation	Young's Point United Church
Decor Cabinets Ltd	Laureate Delta Rho	Rolls Royce Canada Ltd	
Disaster Mitigation Services	Lions Club of Apsley & District	Rotary Club Of Bridgenorth	
Durham Transport		Ennismore Lakefield [BEL]	
		Royal Canadian Legion Branch #300 [Norwood]	

# Communities That Show Up

Across the City and County of Peterborough, community members continue to support Community Care in ways that are practical, generous, and deeply local. From long-standing traditions to grassroots volunteer-led efforts, these initiatives do more than raise funds. They bring people together, strengthen local connections, and help ensure services remain available close to home.

This year, three community-driven initiatives once again demonstrated the remarkable commitment of the people and communities we serve.

## Buckhorn Bottle Drive

What began as a simple idea has grown into one of the Buckhorn office's most successful grassroots fundraising efforts. Each week, volunteers sort and return bottles collected through the Municipality of Trent Lakes depot, transforming empty cans and bottles into meaningful local support.

In 2025–2026, the Bottle Drive raised more than **\$23,500** for the Buckhorn office. But for the volunteers behind the effort, the experience has become about much more than fundraising. Through shared shifts, inside jokes, and countless hours spent working side by side, the group has built lasting friendships and a strong sense of community rooted in purpose and teamwork.



## Havelock Toonie Auction

Now celebrating its 20th anniversary, the Havelock Toonie Auction has become a cherished community tradition. Each December, neighbours gather to share a meal, reconnect with friends, and bid on donated prizes, all in support of local programs and services.

This year's event raised a record **\$11,375** for the Havelock office despite being relocated to a smaller venue during renovations at the Havelock Lions Community Hall, the long-time home of the auction. Year after year, tickets sell quickly as community members eagerly support an event that has become both a fundraiser and a treasured local tradition. More than the prizes or proceeds, the Toonie Auction reflects something deeper: neighbours coming together to care for one another and strengthen the community they share.

## Meals to Go

Meals to Go continues to reflect the same spirit of care and connection that defines Meals on Wheels itself. Through the program, businesses and community members purchase pre-ordered lunches prepared by our Meals on Wheels provider and delivered by volunteers throughout the community.

Held twice during the 2025–2026 fiscal year, Meals to Go raised more than **\$15,600** in support of Meals on Wheels programs and services. Since launching in 2011, the initiative has grown into more than a fundraiser. It has become a community tradition that highlights how small acts of generosity, multiplied across hundreds of people, can make a meaningful difference in the lives of seniors and adults living with disabilities.

Together, these initiatives represent just a few of the many ways our communities continue to support Community Care Peterborough. Whether through volunteering, attending events, organizing fundraisers, or making donations, this generosity helps ensure our clients remain connected, supported, and cared for close to home.



# Every Moment Matters

## Honouring Iris Crowder's 25 Years of Service

The first time Iris Crowder truly understood the impact of Community Care was not during a busy day at the office. It was at a funeral.

She had come to pay her respects to a former volunteer driver when she noticed something displayed prominently near the entrance: a certificate of appreciation she had signed years earlier. At the time, it had felt like one of many routine acknowledgements. But seeing it carefully preserved and honoured by the volunteer's family stopped her in her tracks.

*"It made me realize you never really know what something means to someone,"* Iris reflected later.

That moment stayed with her. Twenty-five years later, it continues to shape how she approaches her work at Community Care Peterborough.

Today, Iris serves as a Care Navigator, helping individuals and families access the supports they need to remain independent at home. While programs and systems have evolved over the years, her approach has remained remarkably simple: listen carefully, respond thoughtfully, and treat every person with dignity.

For Iris, meaningful care is often found in small moments.

Not long ago, after registering a new client for Meals on Wheels, Iris paused before ending the conversation and asked a simple question: with the Good Friday holiday approaching, did she have enough food to get through the weekend?

The client had not considered it. As the reality sank in that stores would soon be closed, she became anxious and



overwhelmed. Her meal deliveries were scheduled to begin the following week, but the need was immediate.

So Iris picked up several frozen meals herself and delivered them that same day.

It was not part of a larger initiative or formal plan. It was simply recognizing a need in front of her and responding with care.

After 25 years, Iris believes those moments are often what people remember most.

The programs may change. Needs evolve. Communities grow older. But the heart of Community Care remains the same: people showing up for one another with compassion, attentiveness, and a willingness to help.

Sometimes that impact is remembered years later in ways you never expect. Other times, it is felt immediately in a moment of uncertainty or relief.

In both cases, it begins the same way: by recognizing what matters in that moment, and doing something about it.



Empowering you to live at home  
in the City and County of Peterborough

Community Care is a registered charity with the Canada Revenue Agency. Charitable Registration No. 1366 80865 RR0001

185 Hunter Street East, Peterborough, ON K9H 0H1

[www.commcareptbo.org](http://www.commcareptbo.org)

tel: 705-742-7067

